



# SELECT S8130


## Folding arm awning with mounting bar

### S8130



#### SELECT S8130

	min. 170 cm max. 1800 cm		min. 140 cm max. 350 cm
---	-----------------------------	---	----------------------------

	0°–60° wall fixing 0°–60° top fixing 0°–60° rafter installation
---	---

#### Minimal width for a given projection

Projection	minimal width	
	2 Arms	4 Arms
140 cm	170	335
<b>150 cm</b>	<b>180</b>	<b>355</b>
160 cm	190	375
<b>180 cm</b>	<b>210</b>	<b>415</b>
200 cm	230	455
<b>225 cm</b>	<b>260</b>	<b>507</b>
250 cm	290	575
<b>275 cm</b>	<b>320</b>	<b>640</b>
300 cm	350	705
<b>325 cm</b>	<b>380</b>	<b>765</b>
350 cm	400	805

### Description

Folding arm awning with operating handle. Fabric cover. Retraction and extension with detachable operating handle. Bevel gearbox with gearbox reduction 4,5:1 and integrated end stop, free wheel operating handle ring incl. spring roller tube gudgeon, with octagonal pin for smooth permanent cover tension. Roller tube made of galvanised steel with groove for the cover fixation. Continuous triangular steel mounting bar, protected against corrosion, powder coated, to hold the arm fixations, roller tube support, brackets, bearing for gearbox and opposite side. Front rail made of extruded multiple chamber aluminium profile with rainwater nose, grooves for the cover and the valance and fixation groove for the folding arms, with end caps. Folding arms made of extruded aluminium profiles, with precision joints made of aluminium casting. Integrated spring and double stainless steel cables, cable protection over the middle joint. Arm supports made of aluminium casting with integrated knock-up security. Fall adjustment by octagonal screw from horizontal up to max. 60°. Installation brackets made of dye cast alloy for wall or top fixing (option: brackets for rafters). Total width more than 601 cm: according to the fall adjustable roller tube support made of aluminium casting with plastic rolls and continuous roller tube band. Operating handle powder coated matching the standard colours, with hook and plastic handle.

**Option electric drive:** Tubular AC motor 230 V/50 Hz with friction brake and electronic end stop. Thermal protection. Protection class IP54 (splash water), with 50–150 cm 4-pole connection cable.

**Option top board:** the top board made of extruded aluminium profile is fixed to the mounting bar and protects the awning against environmental influences.

#### METHOD OF DELIVERY

Awnings completely assembled, with cover.  
Awnings of more than 900cm width prepared to link.

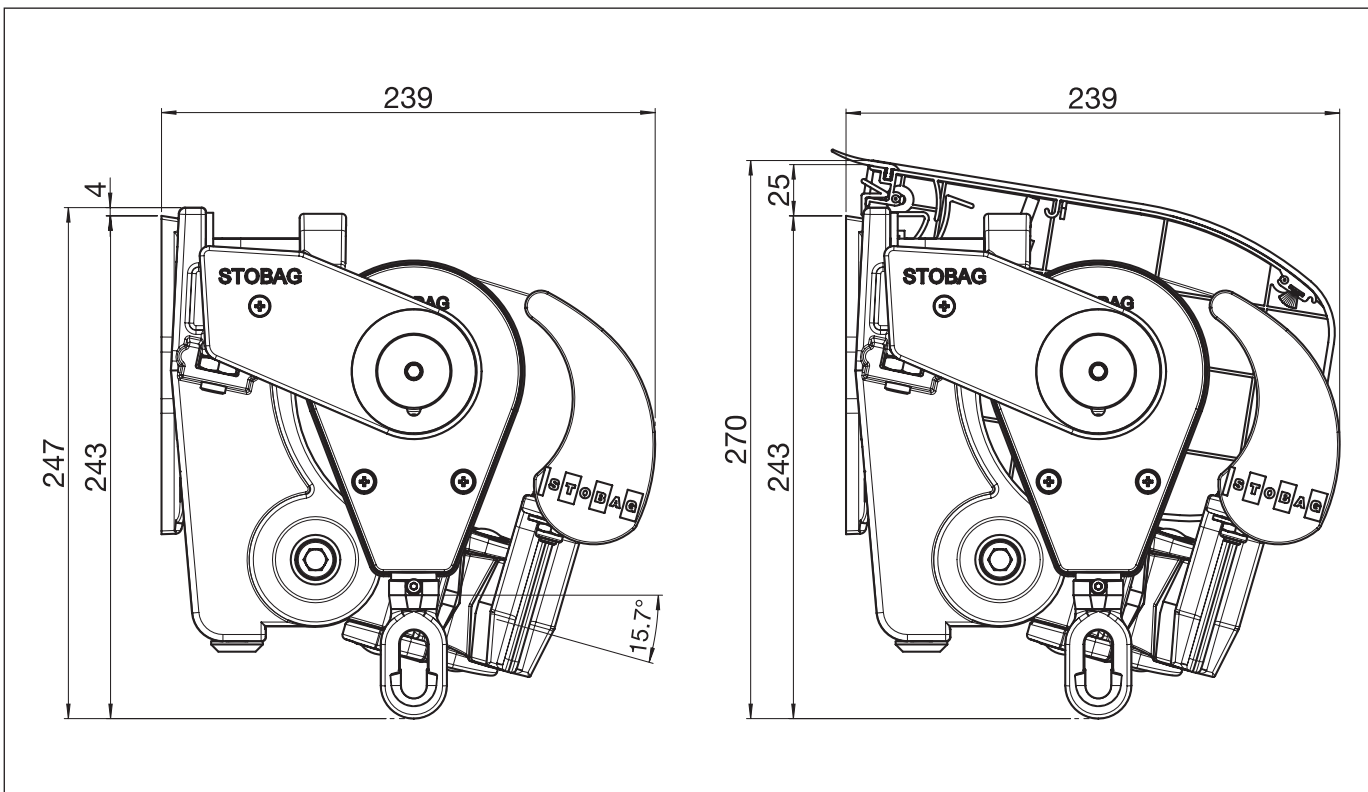


# SELECT S8130

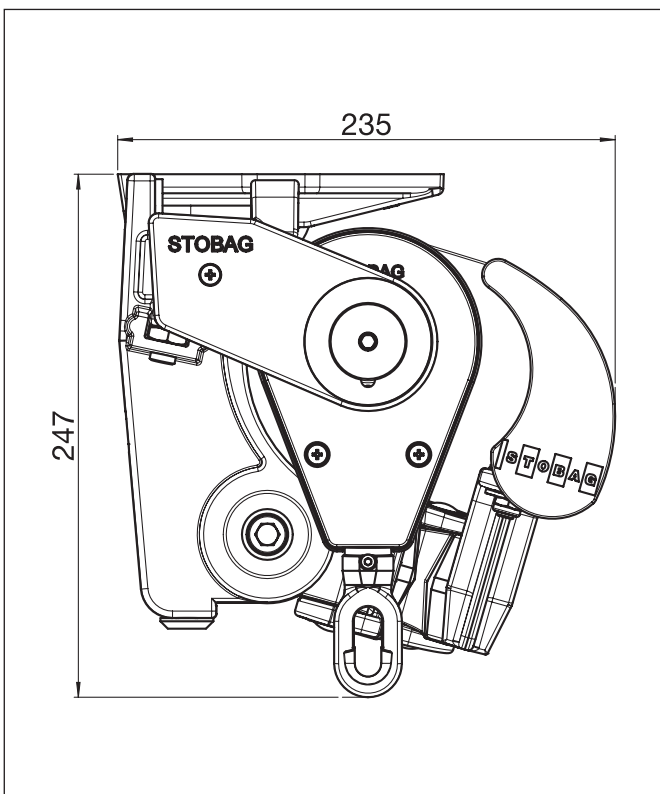
Folding arm awning with mounting bar

## S8130

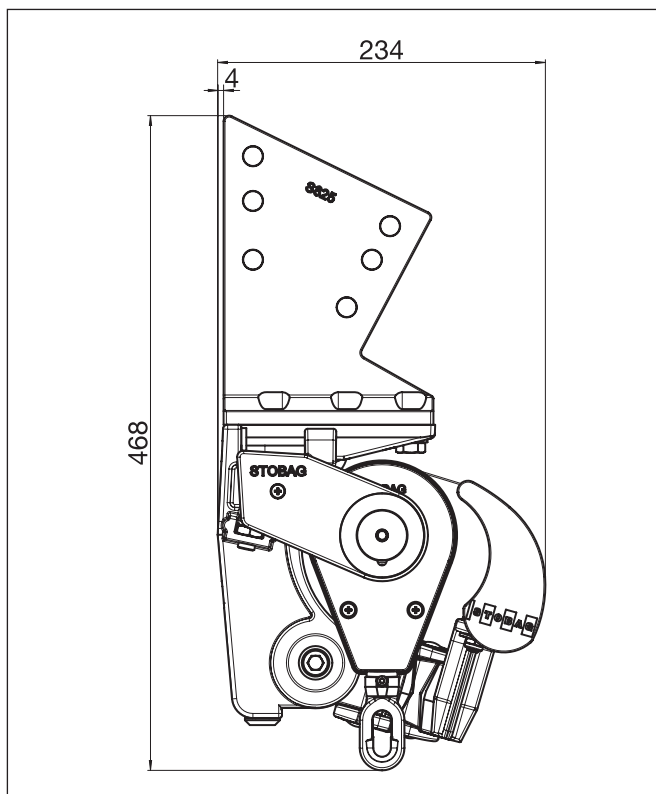
## Wall fixing



## Top fixing



## Rafter installation

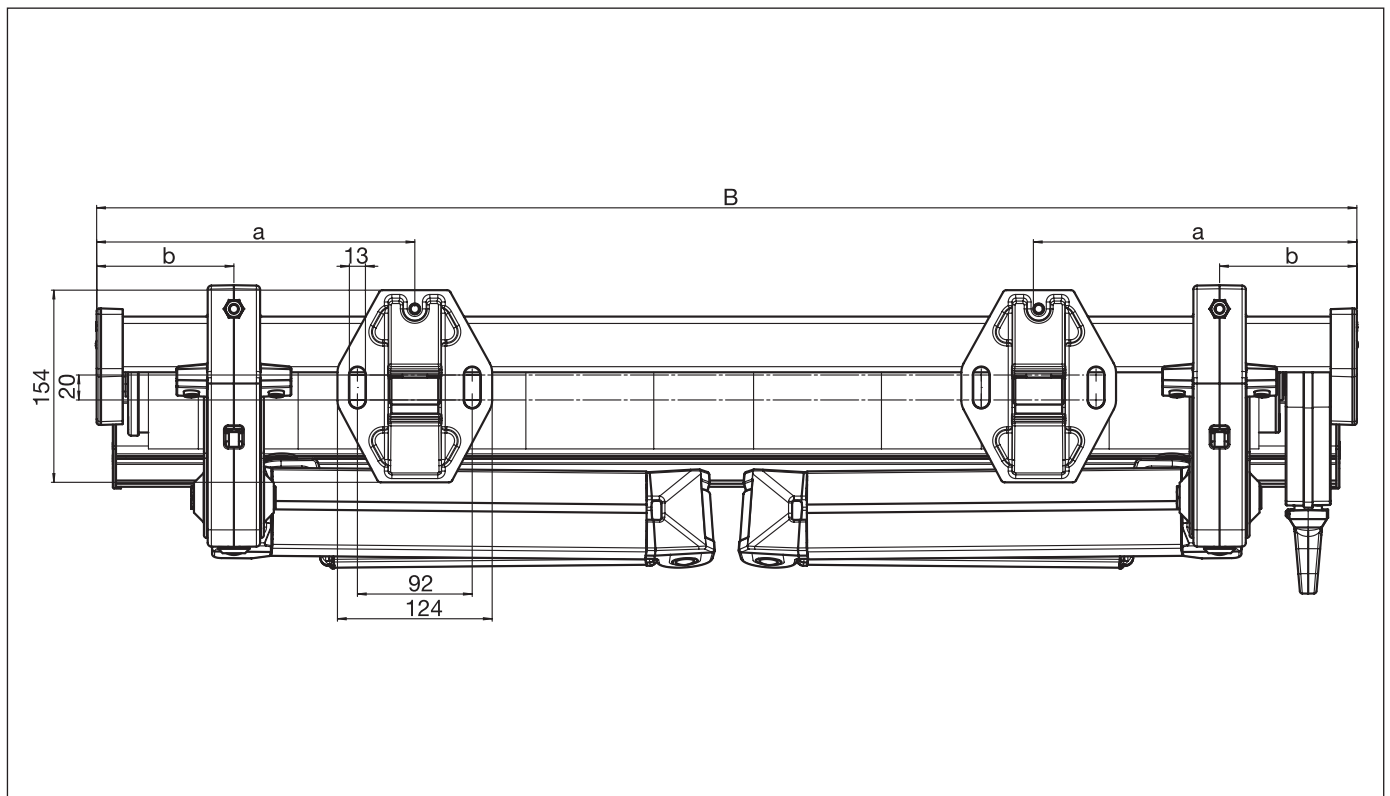


# SELECT S8130

Folding arm awning with mounting bar

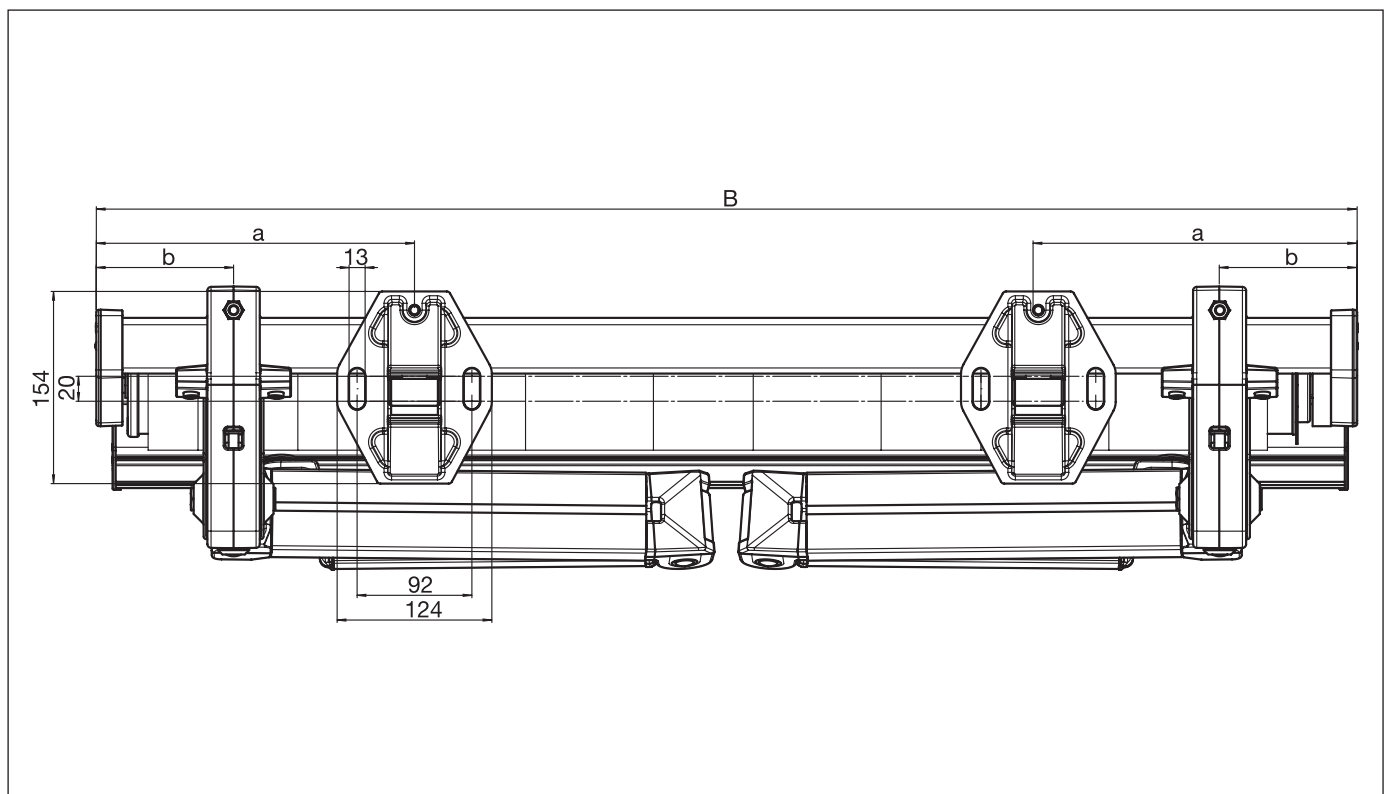
S8130

Installation drawing with gearbox



S8130

Installation drawing with motor drive



B = Total width