


SELECT-OMBRAMATIC S8135

Folding arm awning with mounting bar

S8135



	min. 170 cm max. 600 cm		min. 140 cm max. 350 cm
---	----------------------------	---	----------------------------

	0°–60° wall fixing 0°–60° top fixing 0°–60° rafter installation
---	---

Minimal width for a given projection

Projection	minimal width
140 cm	170
150 cm	180
160 cm	190
180 cm	210
200 cm	230
225 cm	260
250 cm	290
275 cm	320
300 cm	350
325 cm	380
350 cm	400

Description

Folding arm awning with operating handle. Fabric cover. Retraction and extension with detachable operating handle. Bevel gearbox with gearbox reduction 4,5:1 and integrated end stop, free wheel operating handle ring incl. spring roller tube gudgeon, with octagonal pin for smooth permanent cover tension. Roller tube made of galvanised steel with groove for the cover fixation. Continuous triangular steel mounting bar, protected against corrosion, powder coated, to hold the arm fixations, roller tube support, brackets, bearing for gearbox and opposite side. Front rail made of extruded multiple chamber aluminium profile with rainwater nose, grooves for the cover and the valance and fixation groove for the folding arms, with end caps. Folding arms made of extruded aluminium profiles, with precision joints made of aluminium casting. Integrated spring and double stainless steel cables, cable sleeves over the middle joint. Arm supports made of aluminium casting with integrated knock-up security. Fall adjustment by octagonal screw from horizontal up to max. 60°. Installation brackets made of aluminium casting for wall or top fixing (option: brackets for rafters).

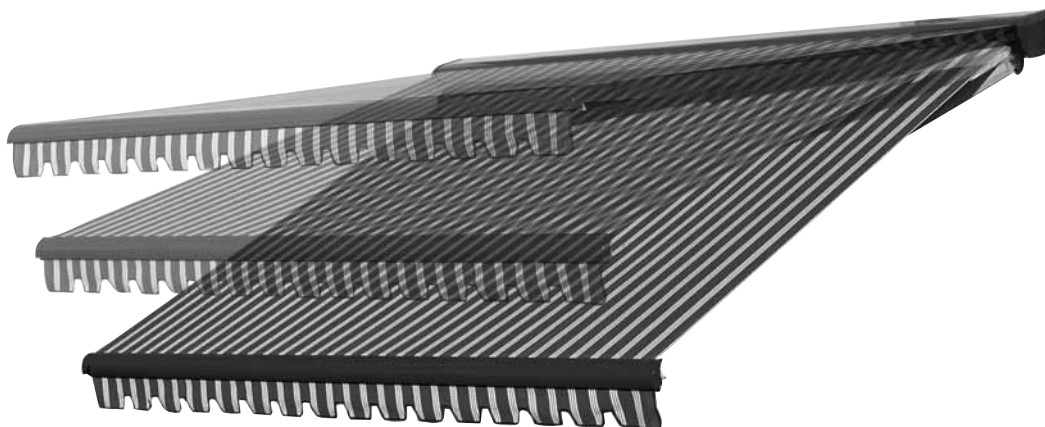
The fall can be adjusted by smoothly turning the angle gearbox integrated in the arm support, and the operating handle gearbox fixed to the mounting bar, linked with two aluminium shafts.

Operating handle powder coated matching the standard colours, with hook and plastic handle.

Option electric drive: Tubular AC motor 230 V/50 Hz with friction brake and electronic end stop. Thermal protection. Protection class IP54 (splash water), with 50–150 cm 4-pole connection cable.

METHOD OF DELIVERY

Awnings completely assembled, with cover.

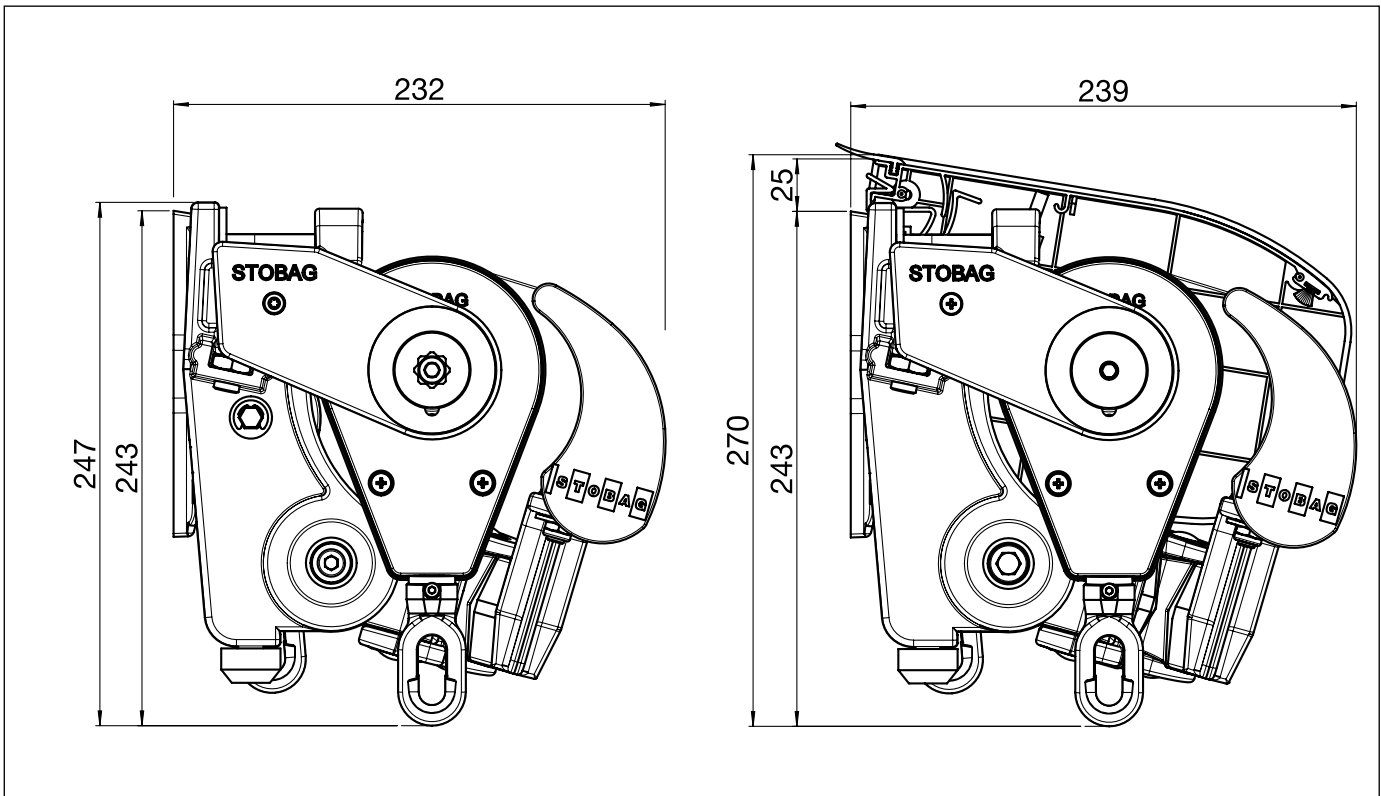


SELECT-OMBRAMATIC S8135

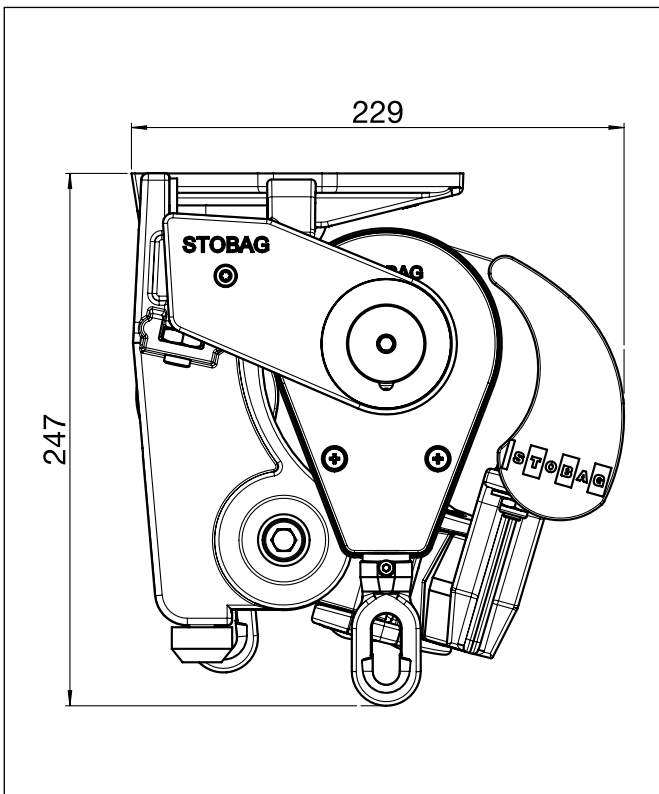
Folding arm awning with mounting bar

S8135

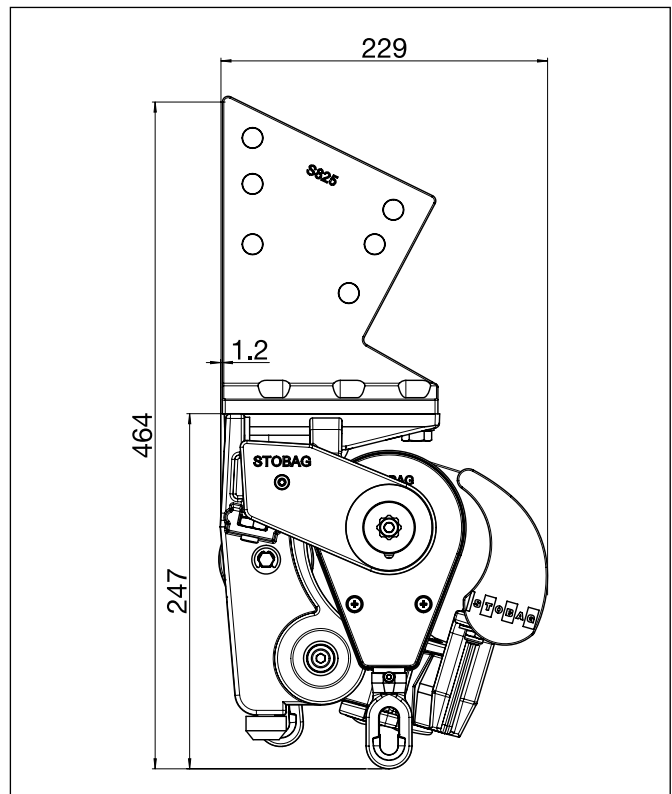
Wall fixing



Top fixing



Rafter installation

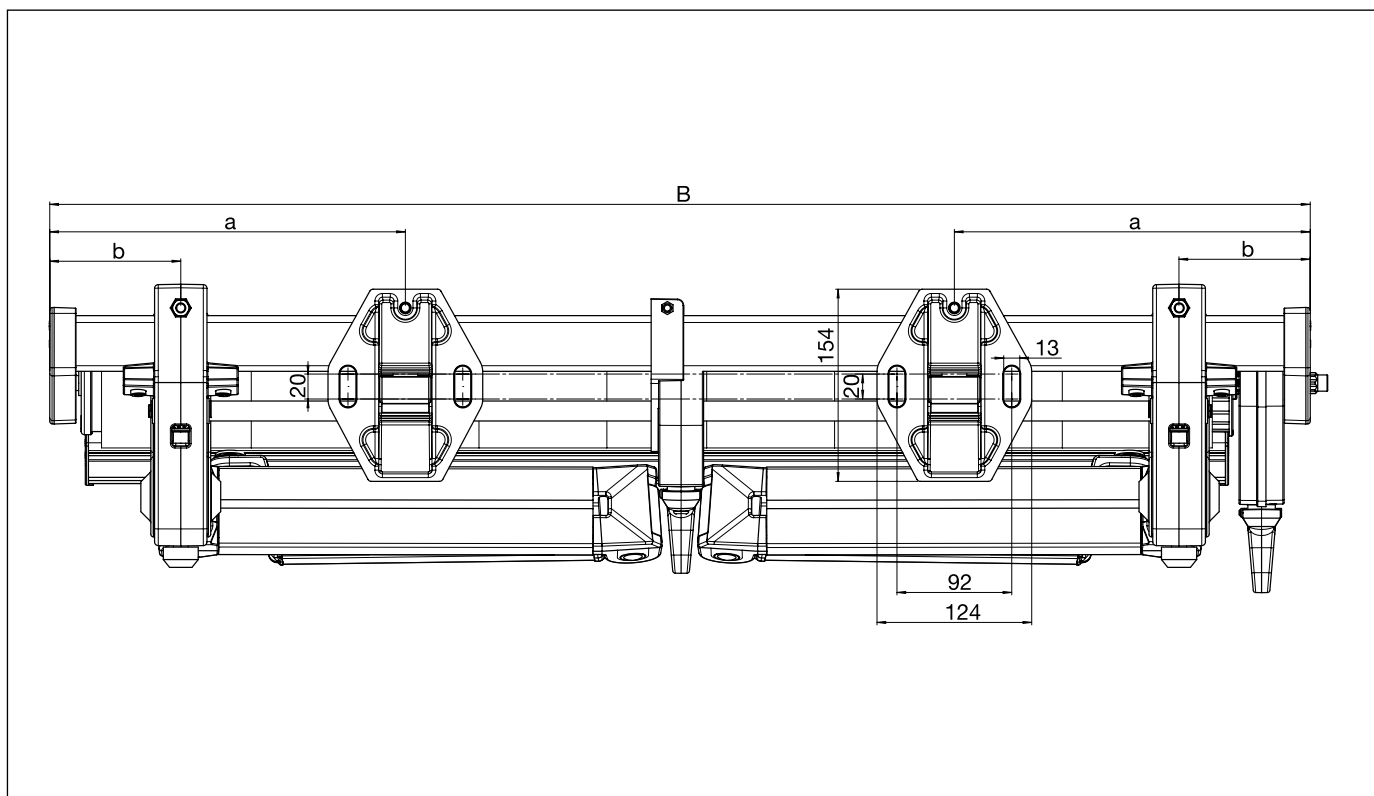


SELECT-OMBRAMATIC S8135

Folding arm awning with mounting bar

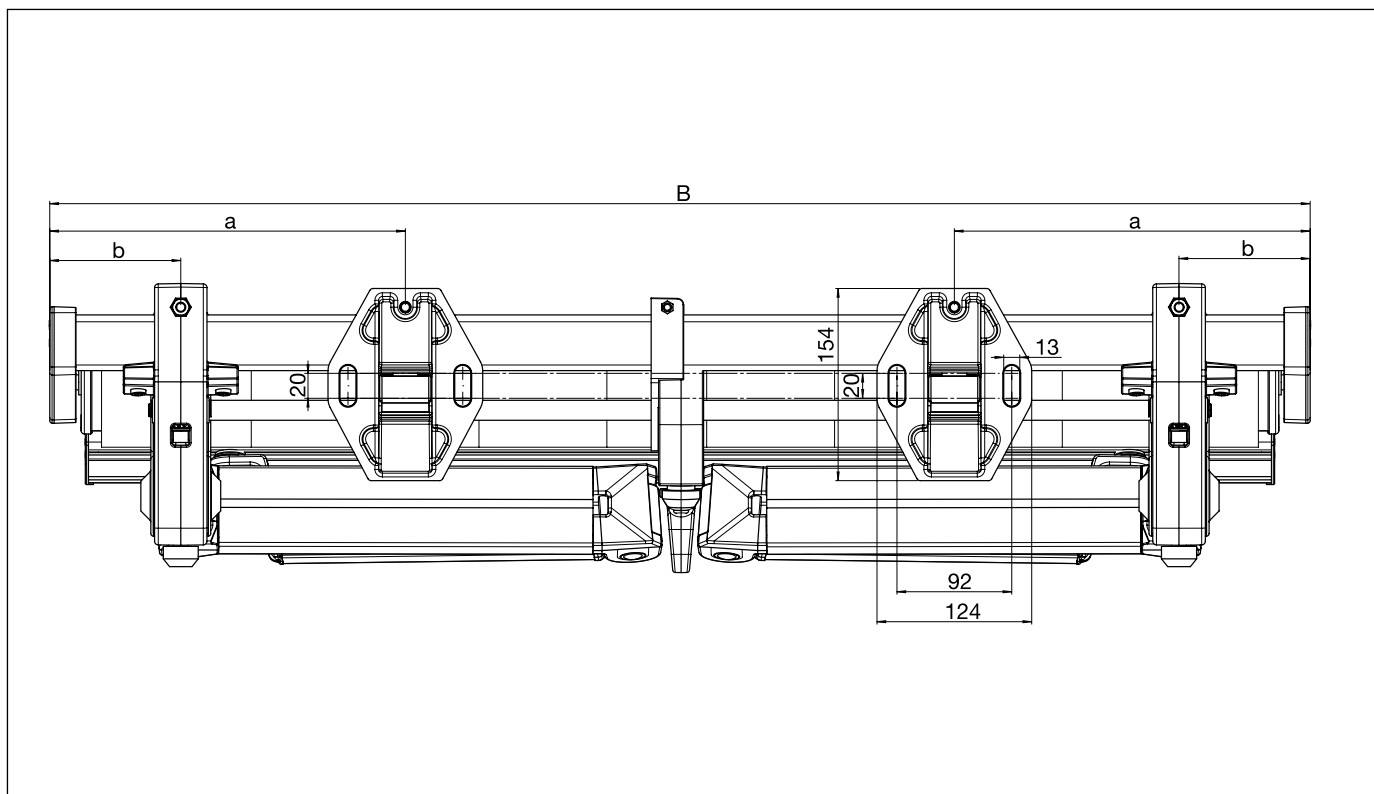
S8135

Installation drawing with gearbox



S8135

Installation drawing with motor drive



B = Total width